

Fitted Sheet Folder, Standard Type Red Diamond

espriTech GmbH • Brunnenthalstrasse 16 • 3306 Etzelkofen • Switzerland

espriTech

The **Red Diamond** folding machine is for the folding and stacking of fitted sheets, flat sheets, duvet covers, curtains, blankets and other flat product - woven, non-woven, non-elastic pieces.

This installation is a stand-alone unit. The folding machine is able to work up various material types including cotton, sateen, mixture fabric, polyester/cotton, and flannel.

The feeding edges of the pieces are hidden as inside fold.

The system is equipped with a cardboard inserting device for standard and book fold folding.



Layout No.: 015108
HS CODE: 8451.5000

Feeding size:

(Additional Sizes on request)

- W = 40"-120"/1000 mm-3050 mm
- L = 40"-130"/1000 mm-3300 mm

Folding size:

(Additional sizes on request)

- A = 6"-15"/152 mm-301 mm
- B = 9"-16"/228 mm-406 mm
- C = Gusset up to 3"/76 mm



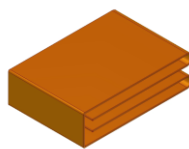
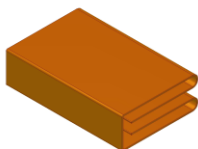
Production:

- One operator for manual feeding
- Up to 9.2 pieces/minute

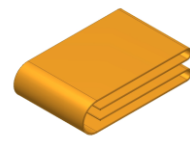
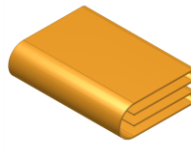
Folding pattern:

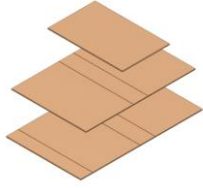
- Inside fold (hidden boarder)

Book fold
Inside fold



Standard fold
Inside fold





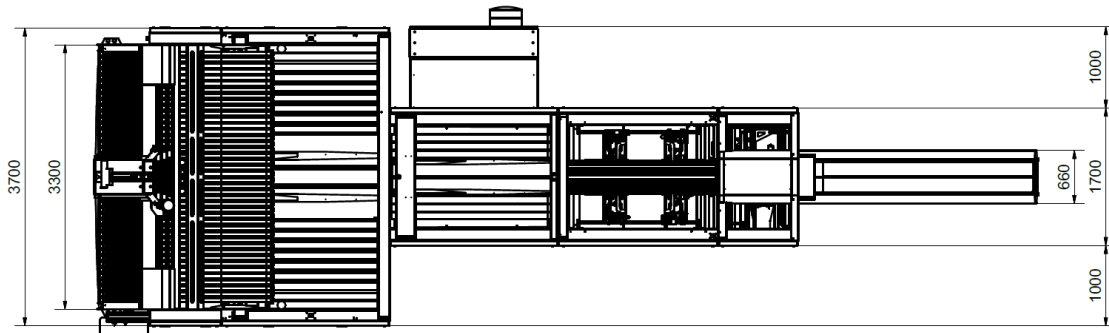
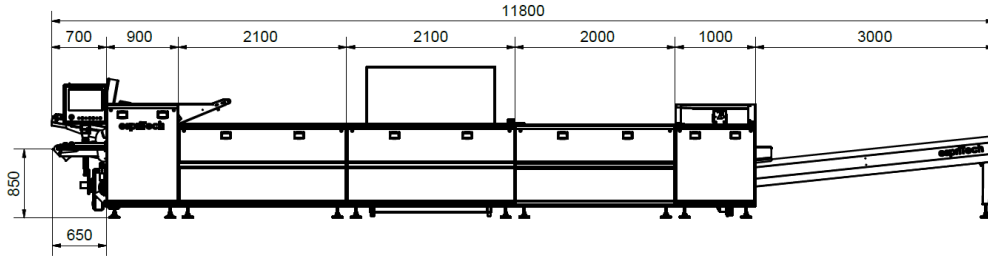
Cardboard types & sizes (Standard & book cardboard for flat sheets):



(Additional sizes on request)

- Maximum width 381 mm (15")
- Minimum width 222 mm (8 3/4")
- Maximum length 698 mm (27 1/2") + height of the gusset max. 76 mm (3")
- Minimum length 444 mm (17 1/2") + height of the gusset max. 76 mm (3")
- Magazine load up to 405 mm (16")

All cardboards will be folded to the very inside of the fabric, non visible



Technical data:

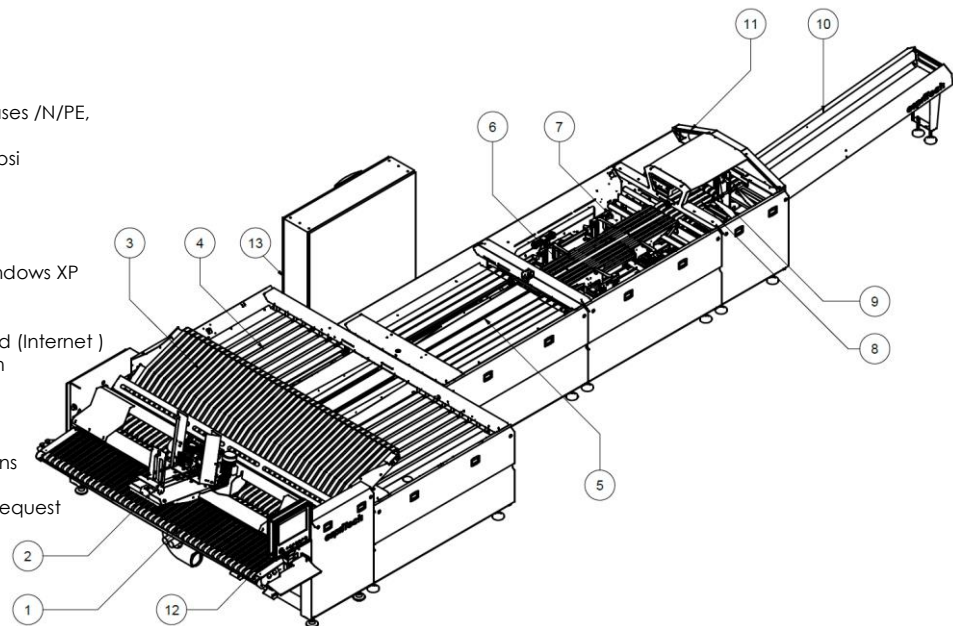
- 230/400 V 50/60 Hz, 3 phases /N/PE, approx. 20 A, 13 kW
- Compressed air 6 Bar/87 psi
- 550 l/min air consumption

Control system:

- Beckhoff TwinCat, PC-Windows XP
- 19" Touchscreen
- 40'000 program spaces
- Remote access integrated (Internet)
- Integrated cooling system

Options

- Additional folding stations
- Roll off stacking system
- Many other options on request



Business contact:

espritech

espritech GmbH
Brunenthalstrasse 16
3306 Etzelkofen
Switzerland

www.espritech.ch
info@espritech.ch

T: +41 32 530 22 78
F: +41 32 530 22 79

- | | | |
|-----------------------------|-----------------|---|
| 1 Feeding station | 6 Cross fold B | 10 Stacking channel |
| 2 Cardboard inserter | 7 Cross fold C | 11 Safety light curtain |
| 3 Cross fold A | 8 Cross fold D | 12 Control panel |
| 4 Lateral folding station A | 9 Stacking unit | 13 Electrical control cabinet with cooling system |
| 5 Lateral folding station B | | |